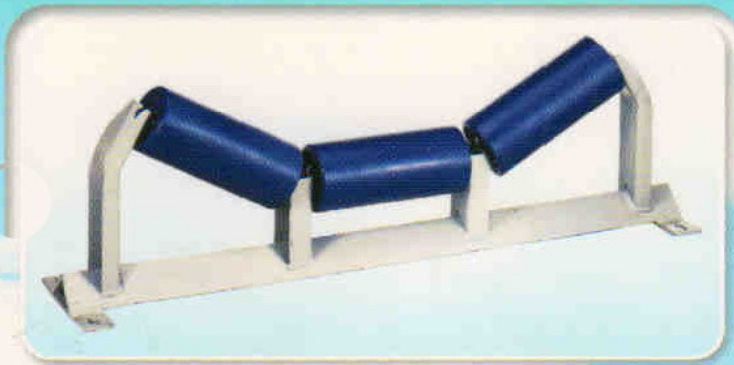


H.D.P.E

Superior Polymer Idler

- Impact Resistance
- Anti-Corroding
- Anti-Static Formulation





JIM WAY

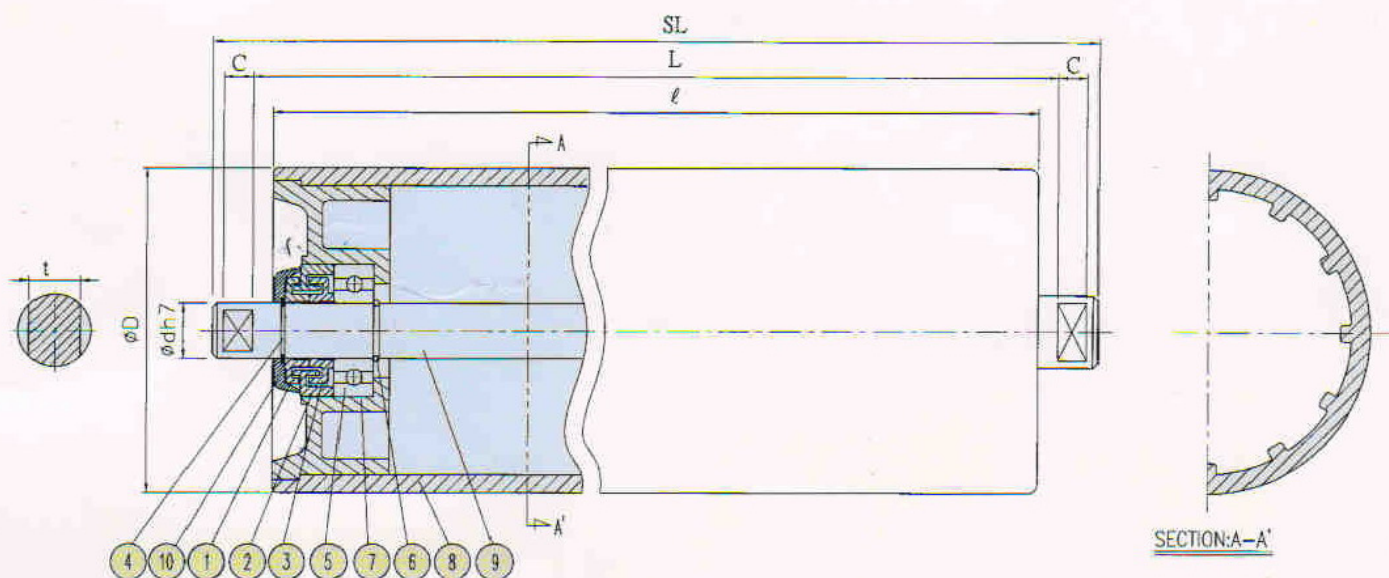
ENTERPRISE CO., LTD.

HDPE Superior Polymer Idler



Features of HDPE Superior Polymer Idler

- A. Anti-Corroding
- B. Low RoationResistance
- C. Good Balance
- D. Labyrinth Seals
- E. Decibel Leave $\leq 40\text{dBA}$
- F. Light weight & power Saving
- G. Anti-static Formulation



NO	DESCRIPTION	MATERIAL	Q'TY
1	OUT LABYRINTH SEAL	NYLON	2
2	MID LABYRINTH SEAL	NYLON	2
3	INNER LABYRINTH SEAL	NYLON	2
4	OUT SNAP RING	S65CM	2
5	BEARING	SUJ2	2
6	INNER SNAP RING	SWC	2
7	BEARING HOUSING	ABS	2
8	SHELL	HDPE	1
9	SHAFT	SS400	1
10	COVER	RUBBER	2



F) Quality Assurance

I. Deflection Test

Testing the stiffness of the idler for the better performance of idler's set under max compression.



II. Dynamic Balance Test

Measuring the imbalance of the rotating idler in order to meet the longer life of the conveying system.
Dynamic Balance \leq G40 (ISO-1942)

III. Water-Proof Test

Testing the water-proof function of the Labyrinth seal.
Water Pressure: 1.5 kg/cm² Idler Speed: 200 m/min
Continue rolling for 2 hours



IV. Dust-Proof Test

Testing the dust-proof function of the Labyrinth seal.
Dust: 250 ~ 300 Mesh Idler Speed: 200 m/min
Continue rolling for 8 hours



V. Decibel Test

Testing the noise level by a decibel meter, in case of the requested application.
Decibel Level \leq 40 dBA



VI. Friction Resistance Test

Testing the friction resistance coefficient (μ) of the idler, in order to reduce the initial torque and power consumption.
Friction Coefficient $\mu \leq 0.015$

$$\mu = \frac{T}{(W+W_1)R}$$

μ : Rotation resistance coefficient
T : Torque (kg.mm)
W : Test Load 60kg
W₁ : Roller Weight
R : Roller Radius (mm)

VII. Anti-Static Value

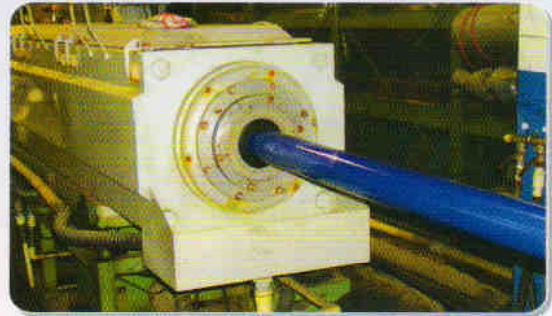
Examining the anti-static value of the HDPE Superior polymer roll for preventing the induced sparks.
(ASTM D-257)



HDPE Superior Polymer Idler Extrusion Process & Achievement



EXTRUSION LINE



HDPE SUPERIOR POLYMER PROCESS



COAL



PULP PAPER



SALT-1



SALT-2



LIMESTONE-1



LIMESTONE-2